

*Living Smarter*



**5000**

**TOWNCENTER**

CONDOMINIUM RESIDENCES



**LIVING SMARTER AT 5000 TOWN CENTER – A Liberating Lifestyle**  
5000 Town Center is a unique high-rise condominium community – the tallest (33 stories) in Michigan. Here, over 200 residents share the luxury of full-service, hotel-like hospitality – and a liberating lifestyle of comfort and convenience, security and serenity.

## 5000 TOWN CENTER AMENITIES

### FOR YOUR ENJOYMENT ...

- Beautifully landscaped grounds with picnic areas and grills
- Heated swimming pool and sun deck
- Fitness center with lockers, saunas and showers
- Lighted tennis and basketball courts
- Large community activity room complete with kitchen and wet bar – available for social functions

### FOR YOUR CONVENIENCE ...

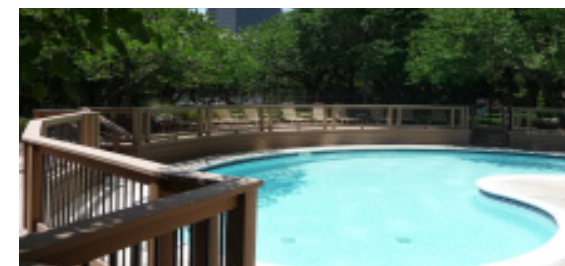
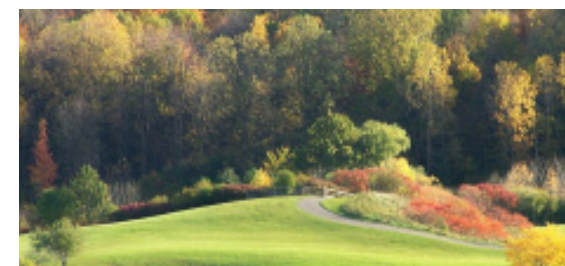
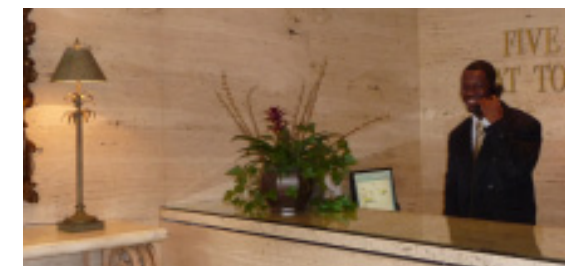
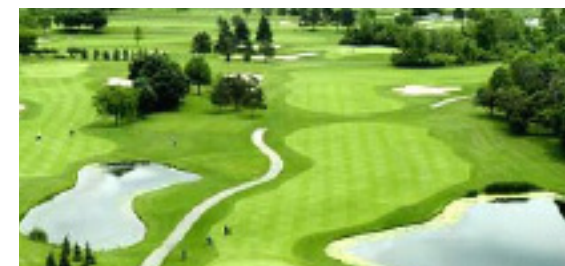
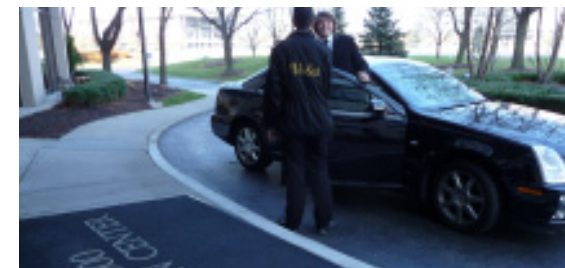
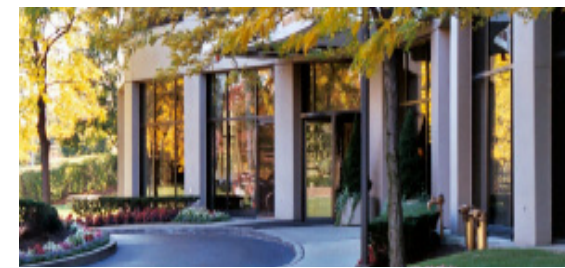
- Wi-Fi “hot-spot” in community room and on pool deck
- Optional valet parking and vehicle detailing
- Dog-walking and suite-cleaning services available
- Assigned parking spaces in covered structure
- Convenient guest parking
- Package receiving room
- Central mail room
- Engineer staff on-site or on-call 24/7
- Barrier-free building

### FOR YOUR PEACE OF MIND ...

- Concierge on duty 24/7 to meet your needs and screen visitors
- Secured parking structure with enclosed pedestrian access
- Secured individual storage lockers
- Electronic security system with key card access, closed circuit TV monitoring and recording
- Engineer staff on-site or on-call 24/7
- On-site Property Manager
- In-house service staff

5000TOWNCENTERCONDO.COM

5000 TOWNCENTER, SUITE 101  
SOUTHFIELD, MI 48075  
P: 248.352.3860  
F: 248.352.4071

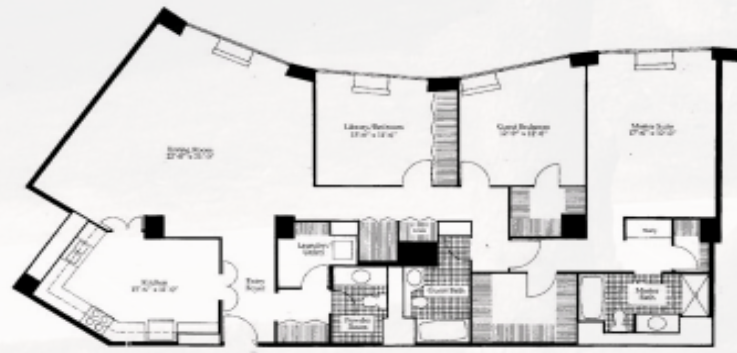


*Living Smarter*

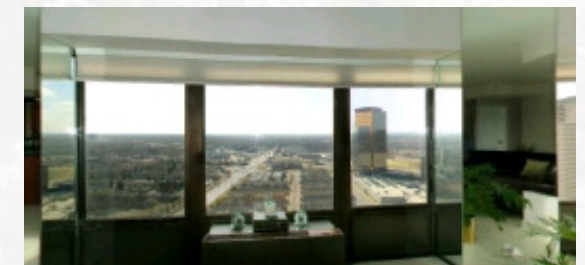
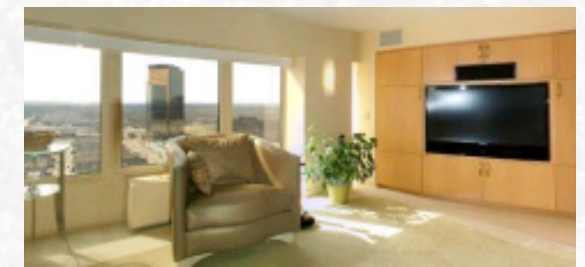
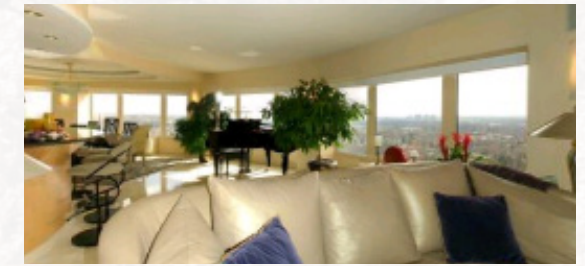
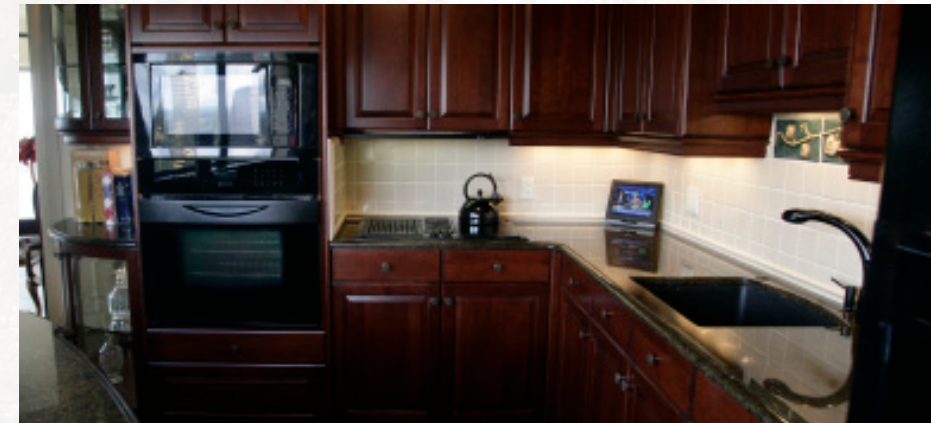


## YOUR HOME ...

5000 Town Center offers a variety of floor plans for one, two and three bedroom homes. The "standard" condos are spacious – ranging from 850 to over 2,000 square feet.



## AROUND YOUR HOME ...



Among your neighbors, you'll find modern, contemporary, traditional, retro and, of course, eclectic decorating schemes.

Some owners have combined adjoining units, torn down walls and erected new ones – in addition to installing their personal preference for appliances, flooring, counter-tops and built-ins.



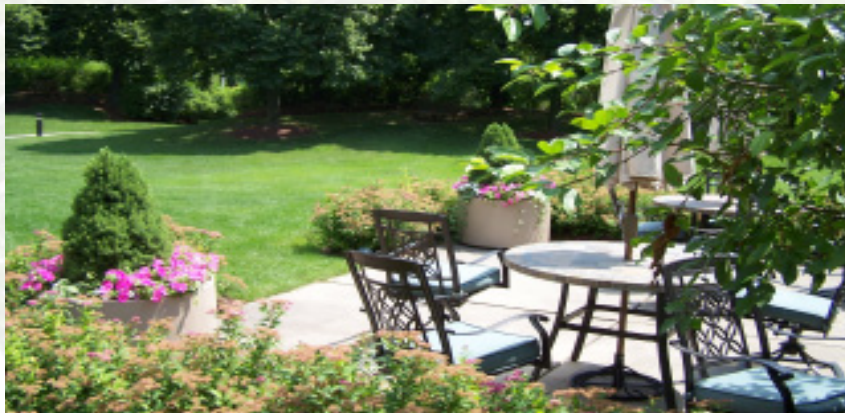
*Living Smarter*

5000TOWNCENTERCONDO.COM



## YOUR FRONT YARD ...

Your “welcome home” is filled with flowers and rolling grassy areas surrounded by shrubs and trees – and a valet to secure your vehicle.



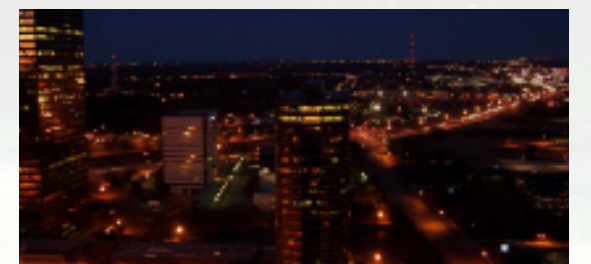
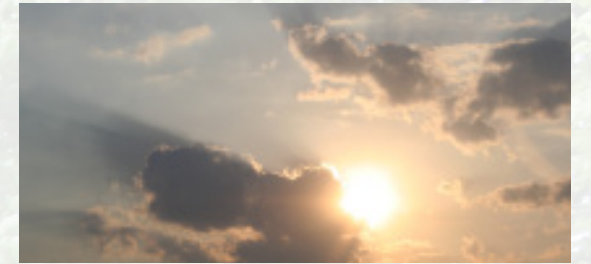
## YOUR VIEW ...

Throughout 5000 Town Center condos you'll find an abundance of windows! 75% of all outside walls are windows overlooking the region. The views are panoramic – and unobstructed. At 5000 Town Center, your living space extends to the horizon – and includes Ann Arbor, and Windsor, Canada.

Living at 5000 Town Center provides a constantly-changing post card view. Surrounding the 5000 Town Center tower are an array of vistas that include the green spaces of Southfield's award-winning 140 acre recreational facility and golf course.

Nearby are the four business towers of the Southfield Town Center complex. In the distance you can see the skyline of Detroit and the Ambassador bridge to Canada. At night, you look down on city lights that create an ambiance that's reminiscent of Manhattan.

The best view, however, may be the ever-changing sky itself – at times you're above the clouds, sharing your sky-high space with hawks and other high-flying birds.



## YOUR BACK YARD ...

The 5000 Town Center residence tower is surrounded by over five acres of park-like grounds that include recreation facilities and also offer the serenity of just sitting and reading – or roaming the Internet on our Wi-Fi network.



*Living Smarter*

5000TOWNCENTERCONDO.COM



## YOUR NEIGHBORHOOD ...

5000 Town Center is located in the heart of The City of Southfield with easy access to most metro area expressways: 25 minutes to metro airport and 20 minutes to downtown Detroit.

The City of Southfield offers both a cosmopolitan, culturally-diverse residential population of more than 78,000 residents and a thriving international business community. With a daytime population nearing 175,000, and over 27 million square feet of office space, Southfield is truly Michigan's undisputed business center.

Residents and businesses alike come to Southfield for its central location, excellent city services and easy access to all of southeastern Michigan.



Photograph provided by the city of Southfield.



*Living Smarter*

5000TOWNCENTERCONDO.COM





Photograph by  
Adam Paul  
Ken Peterson  
Elena Sciopu

MANAGEMENT OFFICE  
5000 TOWN CENTER, SUITE 101  
SOUTHFIELD, MI 48075  
PH: 248.352.3860



*Living Smarter*

5000TOWNCENTERCONDO.COM

MANAGEMENT OFFICE  
5000 TOWN CENTER, SUITE 101  
SOUTHFIELD, MI 48075  
PH: 248.352.3860



**5000**  
**TOWNCENTER**  
CONDOMINIUM RESIDENCES

*Living Smarter*